

**Helix**
Biosciences
Partner in your innovation



NEW
PCR

ENQUIRE NOW 

 **1800 890 4669**
 **011-41613622**
011-45062522

OUR PRODUCTS



AUTOCLAVE VERTICAL

- Inner/outer Chamber 304 Grade S.S
- Low water cut Off; Automatic pressure Valve; Pedal lifting device, Steam release valve; Water outlet valve; Auto purging, Working at 15 psi & 121°C



AUTOCLAVE HORIZONTAL

- Cylindrical / Rectangular design, Stainless steel interior and exterior, ISI marked flange / immersion heating elements
- Working pressure 15 psi to 20 psi, Standard temperature 121°C



BIOSAFETY CABINET CLASS II-A2 & CLASS II-B2

- Construction inner,SS 304, outer Body Ms Power Coted
- Air recirculation recirculate approximately 70% air and 30% exhaust.
- HEPA filter efficiency 99.95% .
- Microprocessor controller for UV, Blower Motor,LED/FL Lamp with inbuilt pressure gauge and UV timer.



LAMINAR AIR FLOW HORIZONTAL & VERTICAL

- Interior : Stainless steel 304, Exterior : MS Power Coated.
- The microprocessor display the flow and down air velocities in real-time on an LCD display.
- Two stage first stage pre filter state second Pre-Filter - 10 microns (washable) HEPA filter (0.3 Microns).



BOD INCUBATOR

- Microprocessor based temperature Controller.
- Inner SS 304 & Outer MS Powder Coated.
- Temperature Range 5°C to 60°C.
- Removable Perforated SS trays,PUF
- Insulation,Air heaters with circulation
- Fan, HCFC/CFC Free Compressor



BOD INCUBATOR SHAKER

- Construction SS 304 /316 / Powder coated MS or GI sheet.
- Air recirculation 100% air exhaust.
- HEPA filter efficiency, 99.95%.
- Microprocessor controller for UV, Blower Motor,LED/FL Lamp.



FUME HOOD WITH BASE CABINET

- Outer Chamber M.S Powder Coated.
- Inner chamber SS 304 / 316
- Exhaust Volume 500-1250 CFM.
- Sink with gas water Tape.
- Fluorescent Light Illumination Greater than 800 Lux.
- Work Table jet black Granite.



DEEP FREEZER MINUS 80°C

- Operating Temperature range -86°C.
- Internal Body Material S.S. 304 & External Body Material Power Coated.
- Microprocessor with PT-100 sensor.
- Audio Visual Alarm,Battery Back Up 8
- Hous (For alarm system & temperature Recorder) etc.



HOT AIR OVEN

- Inner Chamber 304 Grade S.S & outer MS powder coated.
- Temperature Range 10°C above ambient to 250°C.
- LED Display, Over-temperature protection.
- 2 – 4 Stainless steel shelves (Removable), Solid doors ,silicone rubber gasket & lock



PLANT GROWTH CHAMBER

- External Epoxy powder coated PCRC sheets.
- Internal High grade SS 304 stainless steel.
- Temperature range 5°C to 60°C.
- Illumination 2000 -3000 lux,
- Humidity Creation Through sophisticated stem injection process.
- Evaporator Finned tube evaporator .

OUR PRODUCTS

ELECTROPHORESIS HORIZONTAL



- Made of high quality Polycarbonate, transparent.
- Gel dimension: 60 × 60 x 120x 120 (mm). Runs up to 2+3 (2.0mm);6+13, 8+18 (1.5mm1.0mm);11+25 (1.0mm) samples.
- Comb: thickness: 1.0 mm, 1.5 mm and 2.0mm. Buffer volume: 650 ml.

HOEFER - ELECTROPHORESIS HORIZONTAL



- Gel Dimensions (W x L) 20 x 20 cm.
- Maximum Buffer Volume 2.2 L.
- Maximum Sample Capacity 160.
- 1 mm thick, 16 well combs, 2 pcs.
- Buffer Recirculation Ports, 2 pcs.
- Handles up to 168 samples.

ELECTROPHORESIS VERTICAL



- Number of gels 1-4.
- Short plate 10.1 x 7.3 cm. Total buffer volume for 2 gels 700 ml & Total buffer volume for 4 gels 1,000 ml.
- Typical run times for SDS-PAGE 35-45 min (at 200 V constant).
- Combs, 0.75 mm, 1 mm & 1.5 mm

HOEFER - ELECTROPHORESIS VERTICAL



- Glass Plate Size (W x H), 18 x 16 cm or 18 x 8 cm
- Spacers 0.75 mm, 1.0 mm, 1.5 mm.
- Combs, 15-well, 1.5 mm thick, 2 pcs.
- Spacers, 1.5 mm thick, 2 cm wide, 4 pcs. Run up to four gels (maximum 112 samples) at one time under identical conditions

MINI TBC TRANS BLOT MODULE



- Transfers two 10 x 7.5 cm gels in just 1 hour. Buffer requirement 450 ml.
- Gel capacity 2 Mini P-4 gels, 2 Ready
- Gel, precast gels. Available either as a complete standalone apparatus or as a module
- Compatible with the buffer tank and lid of the Mini P-4 cell.

HOEFER - ELECTROPHORESIS POWER SUPPLY



- Voltage 10-300 V in 1 V steps
- Current 4-500 mA in 1 mA steps
- Maximum Wattage 90 W Timer 0-999 minutes. Output Modes Constant voltage or current
- Indoor Use 4-40°C, Humidity 80%
- Universal Voltage Input 100-240 VAC, 50/60 Hz

ELECTROPHORESIS POWER SUPPLY



- Voltage 10-300 V in 1 V steps.
- Current 4-600 mA in 1 mA steps.
- Output accuracy: ±1%.
- Output Power: 100 W max.
- Display: 3 digital LED.
- Timing: 1 -999 min fully adjustable.
- Resume function: Yes after power failure

BALANCE ANALYTICAL



- Calibration Internal
- Type Of Weighing Scale Digital
- Pan Size 90mm, Display Touch screen
- Readability (0.1mg), Linearity +- 0.0003gm
- Response Time 4-5 Sec
- Frequency Hz 50-60 Hz
- Voltage AC 220 Voltage
- Humidity Range 50-70% RH

GRADIENT THERMAL CYCLER 96WELL



- Sample Capacity 96 × 0.2 ml (PCR tube/Plate)
- Temp. Range 4 ~ 105 °C (min. resolution: 0.1 °C)
- Heating Performance: max rate of 6°C/sec.
- More Durable Structure Design
- Remote Operation Interface on Mobile Phone App.

GRADIENT THERMAL CYCLER DUAL-BLOCK



- Block Capacity: Holds 48 × 0.2 ml PCR tubes for efficient workflows.
- Temperature Range: 4 – 105°C with a precise resolution of 0.1°C.
- Heating Performance: Max rate of 3°C/sec.
- Cooling Efficiency: Max rate of 2.5°C/sec.

OUR PRODUCTS

GRADIENT THERMAL CYCLER 32 WELL



- Single step time range 1~59m59s.
- Temp. range 4~99.9°C, capacity 32×0.2ml
- Max. heating rate 6°C/s, cooling rate 5°C/s
- Hot cover temp. range 30~105°C.
- Gradient temp. range 30~99.9°C.
- Gradient temp. accuracy ±0.3°C.
- Temp. uniformity ±0.25°C.

HANDHELD UV LAMP



- Choosing 254nm or 365nm UV light;
- Filter Size: 177 × 48 (mm).
- Wavelength: 254nm and 365nm.
- Power of UV light: 254nm: 8W. 365nm: 8W.
- Light transmittance of wavelength (230nm-400nm) ≥ 40%.
- Power source : Voltage of power source: AC 220V±22V

GEL DOCUMENTATION SYSTEM



- Resolution 5 MP, 2592×1944, Grey Scale 16bit (65536 Grey scales).
- EB stained DNA, UV Plate Wavelength 302 (Optional 254 or 365nm).
- Transmission area 21cm×26cm.
- Lens F1.2 motorized lens, Auto Focus Function, Filter system, Standard 59nm filter.

BACTI CINERATOR STERILIZER



- It takes 20 minutes to heat up to the highest
- Heating Speed 20min (to max. temp.)
- Max. Sterilize Diameter Φ14mm
- Heating Element Length 140mm
- Voltage AC220V or AC110V, 50-60Hz
- Power 250W

HAND HELD HOMOGENIZER



- Speed Control Range 8000-35000rpm (digital display).
- Hand Held Design with Stand as optional.
- Smart & Light Weight with Ergonomic Design
- Working noise: 72dB(A).
- Appropriate for 0.5~250ml liquid sample

HOMOGENIZER



- Speed range (rpm) 2430 rpm--4260 rpm, increment 10 rpm
- Cycle 10
- Programmable 50
- Samples 24×2 mL/1.5 mL, 12×5 mL grinding tube
- Noise <70 db
- Adapter Rotor for 2 ml×24 (standard) or rotor for 5 ml×12 (optional)

ICE FLAKING



- Fully Automatic, microprocessor control.
- Stainless Steel construction.
- Continuous Ice Flakes Output.
- CFC free compressor, Low water level detection, Overload protection.
- Noiseless operation, Compact Design and low maintenance.
- Available in 30, 50, 100, 200 & 300 kg

INCUBATOR



- Inner Chamber 304 Grade S.S & outer MS powder coated.
- Temperature range Ambient+5 to 70°C.
- Dual display PID controller Display SV & PV Auto tuning feature.
- Insulation Glass wool, Insulated door
- Mechanical latch / clamp, Glass window

INCUBATOR SHAKER



- Inner Chamber 304 Grade S.S & outer MS powder coated.
- Temperature range Ambient +5 to 70°C.
- Dual display PID controller.
- Display SV & PV Auto tuning feature.
- Insulation Glass wool, Shaking Speed 50 to 250 rpm.

INCUBATOR SHAKER



- Speed Range 50rpm~300rpm.
- Shaking Orbit 20mm(circle).
- Temp: R.T.+5~60.
- Temp. Stability@37°C±0.3,
- Timer 1min~99h59min.
- Different platform option is available.

BALANCE TABLE TOP



- Capacity 15kg,20Kg
- Readability 0.1 g (100mg)
- Repeatability 0.1 g
- Linearity 0.3gm
- Pan Size (mm) 230x320
- Display LCD
- Interface RS232C Yes
- Tare Range Full
- Operating Temp 10°C to 40°C

MINI CENTRIFUGE



- Speed Range 300-5000RPM, increment:10rpm
- Driving Motor Brushless DC Motor
- Display LCD,Program Memory 2
- Safety Device Door interlock, Overspeed detector, automatic internal diagnosis
- Acceleration/Deceleration 1|2

MICRO CENTRIFUGE HIGH SPEED



- Max. Speed 16000rpm
- Max. RCF 19040×g
- Time Range 0~99min59s
- Noise (dB) ≤ 55
- Capacity 0.2 ml to 5 ml and PCR Plate
- Speed Accuracy ±20r/min
- Acceleration and deceleration 10 Kinds

MICRO CENTRIFUGE HIGH SPEED REFRIGERATED



- Max.,Speed,21000 rpm.
- Max. RCF 30910×g.
- Rotor Capacity 0.2mL to 100 ml -20°C~40°C
- Run Time 1-99h59min
- Safety Devices Door interlock, Overspeed detection,
- Noise,level,≤58dB.

MICRO - PLATE CENTRIFUGE



- Rotating speed 2200~2800rpm
- Timing range 15sec ~1min59sec
- Max (RCF) 550g
- Acceleration time ≤10sec(from 0 to 2800rpm)
- Brake time ≤4sec(from 2800rpm to 0)
- Lid Open Auto Stop Yes
- Short run Yes,Capacity 2 PCR plates

MAGNETIC STIRRER



- Plate dimension Φ135mm (5 inch)
- Plate material Stainless steel cover with ceramic
- Motor Type Brushless DC Motor
- Heating power 500W
- Max. stirring quantity of single position (H2O) 3L
- Max. magnetic bar 50mm
- Speed range 200-1500rpm

MICROPLATE READER



- Work individually or via PC;
- Windows system, Wifi function;
- Equipped with 405nm, 450nm, 492nm,
- 630nm & 4 to 6 position to be installed;
- Eight-channel optics for fast reading.
- Reference channel for optimised light intensity;Built-in thermal printer.

MICROPLATE WASHER



- Large LCD display, menu designed for convenient use;
- Waste liquid overflow alarm function;
- One-point, Two-point and Complete bottom wash;
- Flat, V-bottom or U-bottom plate and strips wash; time 0.1~9.9s,Wash cycle 1-99 times

MULTI-TUBE VORTEXER



- Speed range 500-2500rpm.
- Speed accuracy ±50rpm (@2500rpm detection).
- Timing range 1s-9999min.
- Working diameter 4mm .
- Interval Timing between Impulse 1-10s

MINI GEL - IMAGER (GEL DOCUMENTATION SYSTEM)



- View Size (mm): 160 (D)* 200 (W).
- Light Source: Blue/Green, White
- Camera: Canon M-series type.
- Effective pixel: 24.2 Megapixels.
- LCD Size: 7" TFT Color. Lens:15mm ~45mm lens,F1.8,(W)F11.0(T).
- Shutter Speed(s)1/4000~30second

OUR PRODUCTS

MAGNETIC STIRRERS HOTPLATE



- High resolution LCD displays.
- temperature sensor PT1000,
- Max. stirring quantity of H₂O at 5L .
- Motor type Brushless DC Motor.
- Heating temperature range Room temp.+5°C - 380°C.
- Temperature display accuracy ±0.1°C.
- Available for different Volume .

ORBITAL SHAKER



- Speed Range 50rpm~250rpm
- Shaking Orbit 30mm
- Time Range 1min~99h59min,Max.
- Loading Capacity 2kgs
- Voltage AC 100~230V, 50/60Hz, Power 50W
- Fuse Protector 250V, 1A, Φ5x20

STACKABLE INCUBATOR SHAKER



- Control interface 7.0 inch LED touch screen.
- Rotation speed 2~1000rpm.
- Temperature control range 4~60°C.
- Temperature display resolution 0.1°C.
- Timer 0~999h. Number of tray 2
- Maximum expansion Stackable up to 3 units.

PH METER



- Wide pH Measuring Range: -2.00 to 18.00, ensuring comprehensive analysis.
- High Precision Resolution: 0.01 for accurate and reliable readings.
- Exceptional Accuracy: Indication error limited to ±0.01 for trusted results.
- Enhanced Functionality: Features a balanced measurement mode and data locking for precise and stable operations.

PCR WORK STATION WITH HEPA



- Construction SS / Powder coated MS / GI sheet/ wooden.
- Front door Manual sliding type (Acrylic transparent).
- Illumination Fluorescent or LED light.
- Air filtration Pre-Filter - 10 microns (washable) .
- HEPA filter (0.3 Microns).

DRY BATH HEATING & COOLING



- Temperature Control Range RT+5°C—100°C & -10°C—100°C .
- Heating Time ≤15min (from 20°C to 100°C).
- Block Temperature Uniformity ≤±0.3°C.
- Interchangeable block available for tubes and plates .

PROBE SONICATOR



- LCD big touch display new type centralized controlled by microprocessor
- Step less regulation of the ultrasonic power
- Frequency 19.5-20.5 KHz
- Display 7 inch TFT touch screen
- Adjustable Power range 1200 W(20%-99%) 650w/900w/1200w

ROTARY EVAPORATOR



- 5L heating bath with wide temperature range
- from room temp. to 180°C .
- Overheating protection temperature at 220°C Speed range: 20 - 280rpm.
- Temperature range: Ambient - 180°C
- Heat control accuracy: ± 1 °C,
- Timer range: 1 - 99 mins Reversible motor: Yes

ROCKING SHAKER



- Speed Range 5~80rpm Swing
- Cycloid 25mm (up and down) / 10°
- Time Range 1min~99h59min
- Max. Load 5.0kgs
- Platform Dimension L.280 x W.228mm
- Voltage AC 100~230V, 50/60 Hz
- Power 50W
- Fuse 250V, 1A, Φ5x20

ROTATING MIXER 3D



- Speed Range 10rpm ~40rpm (Adjustable)
- Reciprocating,Swing,Angle,
- Range.20°~99°(Adjustable)
- Time Range 1s~999min/Continuously
- Voltage AC 100 ~230V, 50/60Hz, Power 4W, Fuse 250V, 1A, Φ5x20
- Dimension(WxDxH)W.240xD.145 x H.210mm

OUR PRODUCTS



SAMPLE CONCENTRATOR

- Temp Range RT.+5°C -160°C, Temp
- Accuracy $\pm 0.5^{\circ}\text{C}$ (@40°C) ,Temp accuracy $\pm 1^{\circ}\text{C}$ (@120°C)
- Temp Uniformity $\pm 0.5^{\circ}\text{C}$ Display accuracy 0.1°C
- Timing range 1min-99h59min/ ∞
- Heating time ≤ 15 min(from 25°C to 160°C)



TUBE ROLLER

- Speed Range 5rpm~80rpm
- Operation Mode rolling
- Amplitude 25mm
- Roller Quantity 6
- Roller Length 280rpm
- Max. Load 4kgs
- Time Range 1min~99h59min
- Voltage AC 100~230V, 50/60Hz
- Power.25WFuse250V, 1A, $\Phi 5 \times 20$



THERMO SHAKER

- Temp setting range 0°C~100°C.
- Temp control range RT+5°C~100°C.
- Time range 1min ~ 99h59min.
- Temp uniformity $\leq \pm 0.3^{\circ}\text{C}$
- Temp accuracy $\leq \pm 0.3^{\circ}\text{C}^*$,
- Display accuracy 0.1°C,
- Speed range 200~1800rpm,



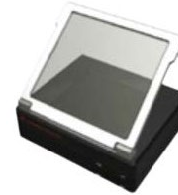
INCUBATING ROCKING SHAKER

- LCD display for speed, tilt angle, temperature and time, See-saw like motion Step motor.
- Temp. setting range 0°C~65°C.
- Temp. control range RT.+5°C ~65°C.
- Time range 1min~99h59min/ ∞ .
- Temp accuracy $\leq \pm 0.5^{\circ}\text{C}$ @37°C.
- Display accuracy 0.1°C.



THERMO SHAKER (with heating lid)

- Temp. setting range 0°C~105°C.
- Temp. control range RT.+5°C~105°C.
- Orbit 2mm,
- Time range 1sec-99min59 sec.
- Temp uniformity $\leq \pm 0.3^{\circ}\text{C}$.
- Speed range 200~3000rpm
- Heating time ≤ 10 min(from 25°C to 100°C)*Fan



ULTRA BRIGHT UV TRANSILLUMINATOR

- Viewing Size 21 x 26 cm.
- Wavelength 365 & 302 nm (UVA & UVB). Blocking Cover Aluminum alloy metal frame. Light Intensity 100% or 50%.
- Filter Ultra Safe UV blocking (block 99.99% UV transmittance) .
- Accuracy CV<5% across the viewing area



ULTRA SLIM® LEDILLUMINATOR

- View size (mm) 120D x 70W
- Wavelength (nm) 470 nm
- Smaller: Single-handedly take
- Accurate: <10% CV across the full filter area
- Easy: Easy for observation and gel cutting with Light source Blue LED light



ULTRA SLIM UV TRANSILLUMINATOR

- View size (mm) 150D x 80W
- Smallness: One-handed lifting.
- Accuracy: <5% CV across the viewing area
- Sensitivity: Up to 0.5 ng nucleic acid.
- Higher S/N ratio Ease: Easy for observation, and gel cutting Outer



UV/VIS SPECTROPHOTOMETER DOUBLE BEAM

- Wavelength 190-1100nm .
- Optical -Double beam Grating 1200 lines/mm.
- Bandwidth-1mm .
- Light Source Imported Xenon Lamp.
- Detector Imported Silicon Photodiode Cuvette
- Holder 10mm single hole cell holder



Ubi-490 UV/Vis single beam spectrophotometer

- Versatile applications: Can be used for a variety of applications
- Data expansion: Data can be exported to a PC or printer via USB or parallel port connections
- Voltage flexibility: Can maintain stable analysis results even in situations with unstable power supply

OUR PRODUCTS

NABI- UV/VIS NANO SPECTROPHOTOMETER



- Stand-alone system with easy-to-use 7.0" LCD touch screen
- Xenon Flash Lamp, Detector CCD (2,048 Pixels), Wavelength Accuracy ± 1 nm Wavelength
- Range 190 – 1,100 nm Spectral Resolution 0.3 nm
- Power Consumption 80 – 100 W

MOBI PLATE SPECTROPHOTOMETER



- Precise wavelength control in increments of 1nm
- Precise readings from 6 to 384-well microplates
- Minimum maintenance utilizing semi-permanent Xenon lamp
- Convenient operation with either PC or tablet software

CO2 INCUBATOR



- Heating: Air jacket with UV lamp
- Temperature range: RT + 5 °C - 60 °C
- Temp. Fluctuation $\leq \pm 0.2^{\circ}\text{C}$ (at 37°C)
- Alarm: audible and visual (CO2 and temperature) Shelves: 2 pieces variable Door: double
- CO2 IR sensor, range 0-20% interior made of stainless steel USB port and LCD touch screen

MICRO PLATE INCUBATOR



- It is mainly used for solution incubation of ELISA plate (96-/384-well), Cell culture plate (24-/48-/96-well) at proper temperature.
- Control Range RT+5°C - 70°C
- Block Temperature Uniformity $\leq \pm 0.5^{\circ}\text{C}$.
- Temperature Control Accuracy $\leq \pm 0.2^{\circ}\text{C}$, Heating

ULTRASONIC BATH/CLEANER



- No nail-bonding process, longer service life of the tank.
- Frequency: 40 KHz .
- Ultrasonic power: 120W
- Capacity: 5L ,10L,22L,Ultrasonic Power adjustable:0-100%
- Timing: digital control (1-99 min adjustable)

VORTEXER



- Operation display pattern Key + digital display.
- Orbit 2mm, Power 30W
- Shaking mode circle,
- Operation mode Continuous running/ Short Mix .
- Speed Range 300 ~ 3000rpm
- Timing Range 1s ~ 999min

WATER BATH CIRCULATING



- Fitted with digital temperature controller
- Excellent temperature accuracy & uniformity
- High-grade stainless-steel interior
- Powder coated, Temp: Amb+5 to 70°C
- Exterior cabinet epoxy powder coated/SS304,10L,15L,20L,30L
- Insulation Fiber Glass wool

VERTICAL ROTATING MIXER



- LED displays time and speed.
- DC brushless motor, stable performance.
- Low noise and long using life.
- 360° vertical circulation rotation, operating smoothly and steadily.
- Different tube holder frames for optional to suit for different kinds tubes.

TRAY DRYER



- Temperature range 50°C to 200°C, 250°C and 300°C, Inner chamber Stainless steel Mild
- Exterior powder coated, Insulation Glass Wool
- Tray SS304 / SS316 ,Door Insulated solid door with clamp Door gasket Synthetic rubber gasket ,No. of Trays 6/12/24/48/96

CHEMILUMINESCENCE IMAGER (MINI)



- Compact and powerful, Easy to use digital camera
- Cooled CCD Camera physical resolution 6 megapixels, 2750*2200 Pixel density and A/D 16 bit gray scale. 65536 dynamic range ≥ 4.6 outer diameter cooling temperature Below -60°C, -30°C

OUR PRODUCTS



UVP GEL SOLO

- Gel Cam 315, 5.0 MP, with 8- 48 mm, f/1.2 manual zoom lens .
- There choice of filter as per customer requirement
- 11.6" large articulating touch screen
USB ports 3-position emission filter tray Wide front door with UV safety



Biometra Compact Multi-Wide

- Universal Casting System: Compatible with gel trays ranging from 7 cm to 18 cm for added flexibility.
- UV-Transparent Gel Trays: Designed for precise visualization and analysis.
- Superior Resolution: Enables efficient separation of nucleic acid fragments without compromising clarity.



UVP CHEMI DOC

- Having CMOS camera of lens 25 mm f/0.95 with at least resolution of 9.0 megapixels A 9.0 megapixel Chemin MOS camera (latest generation Scientific-CMOS) UV Transilluminator with 16.8 X 21cm illumination size
- Three (3) slot automated emission filter-tray with pre-installed broad band filter



BIOMETRA PCR

- Biometra Tone basic Gradient model,
- Tadvance with interchangeable block option like 96 well, 2x48 well, 384 well and up to 8°C ramp rate
- Biometra TRIO 3 x 48



ANIMAL IMAGING SYSTEM

- Two high performance cooled camera options.
- Illumination sources – overhead laser bars in RGBW, NIR, and violet (405nm).
- Motorized lift for sample magnification range.
- Included warming plate or UV transilluminator. VisionWorks software for one-click workflows



Analytik Jena REALTIME PCR

- qTOWER iris Series
- 96 well/384 well
- Reaction volume 5 - 100
- Available Extended wavelength range from UVA to NIR due to innovative LED light source



UVP CROSS LINKER

- UV induced mutations
- Membrane crosslinking
- Biomolecular crosslinking
- Energy: 0000.1-9999.9mJ/cm2
- (0-10J/cm2)



Analytik Jena CyBio SELMA

- Your Personal Assistant - Inspiring Technology Making Pipetting so Much
- Easier/Intuitive operation without the need for programming
- Compact design which fits on any lab bench as well as into most of the laminar flow hoods
- Comfortable and error free transfer of 96 or 384 samples in a single step



UVP PCR WORK STATION

- Microprocessor based controller
- Work top: stainless steel
- Available with HEPA and with out HEPA as per Customer Choice.
- 254 nm UV irradiation to achieve efficient decontamination.



Analytik Jena CyBio FELEX - LIQUID HANDLING

- Volume range 1 µL – 1000 µL *
- Plate formats 24, 96, 384, 1536
- Tubes 0.2 mL – 5.0 mL
- 2D & 3D visualization of your deck layout
- Pipetting channels 1 – 384

OUR PRODUCTS



Intelligent ultrasonic Homogenizer

- Intuitive process, external transparent front door, built-in LED light
- Can only store, can create up to 20 groups of operating procedures
- Flexible parameters, ultrasonic time, continuously adjustable power, good stability



LEICA Microtome

- Precision Sectioning: Adjustable thickness from 0.5 to 60 μm
- Extended Reach: Horizontal feed up to 25 mm, vertical stroke 59 mm
- Smart Retraction: ON/OFF control ($\sim 20 \mu\text{m}$) for optimal specimen handling
- Enhanced Orientation: XY tilt $\pm 8^\circ$ for precise positioning



UNIVERSAL TIPS FOR PIPETTE

- Tips For pipette, Graduated
- Universal Filter Tips For Pipette
- Bulk-Tips--Filter



LEICA Cryostat

- Precision Sectioning: Adjustable thickness from 1 – 100 μm .
- Specimen Handling: Horizontal feed up to 25 mm; vertical stroke of 59 mm.
- High-Speed Capacity: Accommodates specimens up to 55 x 55 mm or 50 x 80 mm for versatile applications.
- Compact Design: Dimensions of 730 mm (W) x 730 mm (D) x 1140 mm (H) ensure an ergonomic fit.



RACK & BOXES

- Multipurpose tube rack 10-18mm/50 wells
- TEST TUBE RACK
- PCR TUBE RACK WITH COVER
- FREEZING BOX



PCR PLATE AND SEALER

- 96-Well PCR Plate,
- Low-Profile, Non-Skirted,
- 96-WELL PCR PLATE,
- SEMI-SKIRT, LOW-PROFILE
- 384-WELL PLATE
- NON-SKIRTED & FULLY SKIRTED
- Deep Well Plate



TOUGH TAG & STATION

- Tough Spot
- White/Green/
- Orange/Yellow, Red, Blue
- Tough Tag Station



GLOVES

- Synthetic Powder-Free
- Clear
- Vinyl Exam Gloves
- Nitrile, Latex powder
- free gloves



LAB SET UP

- Lab set up
- Pharmacology Lab set up
- Food Lab set up
- Biological Lab set up



PARAFILM

- Parafilm 2 Inch/50 Mm
- Parafilm 4 Inch/100 Mm

OUR PRODUCTS

DNA RNA EXTRACTION KITS



- Plasmid Extraction kits .
- Gel/PCR Purification Kits.
- Genomic DNA Extraction from
- Blood/Culture Cell/Tissue/Plant/ Fungi/Yeast.
- RNA Extraction from Blood/Cultured Cell/Tissue/Plant and Viral Nucleic Acid Extraction kits etc.

HELIXZOL (TRI REAGENT), NUCLEASE GONE & RNA STABILIZATION SOLUTION



- Tri RNA isolation reagent is essential for extracting RNA from various .
- The nuclease Gone ensures that the RNA extracted remains free from contamination by nucleases.
- RNA stabilization solution helps preserve RNA during storage and transportation.

DNA & PROTEIN MARKER



- DNA markers like 50bp, 100bp, 1kb, as well as markers like Kplus and XLarge for higher size of DNA .
- Protein markers for 10-175 kda, 10-180 kda, 10-245 kda and 6.5 to 270 kda are valuable for protein electrophoresis, the visualization process, saving time and ensuring accuracy

PCR REAGENT & BIOCHEMICALS



- Helix offers a range of PCR reagents to support DNA amplification.
- Taq DNA Polymerase and dNTPs a commonly used enzyme in PCR.
- Components like buffers, availability of this master mix with or without a DNA marker is useful for different experimental setups,

RTPCR REAGENTS & KITS



- HB cDNA Synthesis Kit
- HB Reverse Transcriptase
- HB RNase Inhibitor
- HB Probes™ One-Step RT-qPCR Kit
- HB Probe Based qPCR Master Mix
- HB SYBER Green™ One-Step RT-qPCR
- HB SYBER Green Based qPCR Master Mix

PEPTIDE SYNTHESIS & ANTIBODY SERVICES



- Helix Offer extensive experience in peptide synthesis and deliver with HPLC and MS data sheet as per customer requested quantity and purity .
- Provide polyclonal antibody Antigen: Peptide, synthesized by us.
- Risk-free Guarantee. No Antibody, No Charge!

PRIMER & GENE SYNTHESIS



- Helix offer Primer Synthesis provides multiple types of modified / labeled primers.
- Fluorescent probe synthesis services.
- Our extensive experience in gene synthesis , our gene synthesis service offers cost-effective solutions and quick turn-around time for your custom DNA synthesis.

ANTIBIOTICS & ELISA KITS



- Helix offeres Antibiotics for cell culture, mammalian cell culture, insect cell culture, and stem cell culture.
- Additionally, their range of Research ELISA kits for various species, offering tools for detecting and quantifying specific molecules, proteins, or analytes of interest

CENTRIFUGE TUBES



- 15ml & 50ml
- Sterile & Non sterile
- Screw-on plugged or flat caps
- Polypropylene, polystyrene

PCR TUBES & STRIPS



- RNase-Free, DNase-Free
- Autoclavable
- Polypropylene



HELIX BIOSCIENCES

📍 **HEAD OFFICE:** A-7, Phase-1, Naraina Industrial Area,
South West Delhi, New Delhi 110 028

☎ +91 11 4161 3622, 4506 2522

✉ sales@helixbiosciences.com
www.helixbiosciences.com

📍 **BRANCH OFFICE:** D-2383 (D Block)
Indira Nagar, Lucknow - 226016

☎ +91 88878 58727, 98733 52078

🌐 www.helixbiosciences.com

